

Addendum No. 2

Date: **April 8, 2024**

Re: **Security Glass Project – Phase 1**

IFB No.: **424-84-4-16**

The following information becomes part and parcel of Invitation for Bid (IFB) #424-84-4-16 effective this date. Firms must acknowledge receipt of this addendum in their solicitation response.

The listed items add to, modify, or otherwise alter the specifications and become part of the solicitation documents. Where a portion of the original specifications are added to, modified, or also altered, the portion not so affected shall remain. Firms may have the right to protest this addendum.

Updates to Scope of Work

Below is the updated scope of work for the project, this supersedes the original posting and the solicitation document has been updated to reflect these changes.

This is an update to the scope at Fisher MS, summary below:

- Revised Fisher MS – Removed openings N, P, Q, R, S, and T from the scope.
Please see attached Drawings.

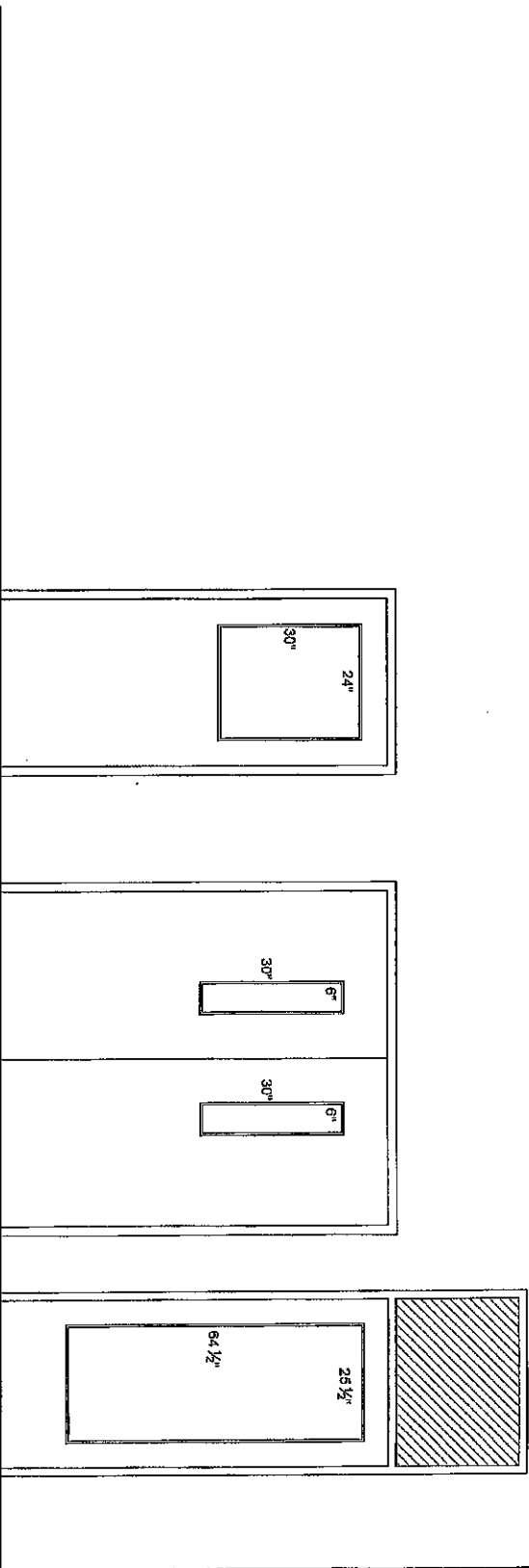
Clarifications

Vendors may be awarded a single location or multiple locations, but each location will be its own Purchase Order.

All other terms and conditions remain unchanged and in force.

Thank you for your interest in the District.

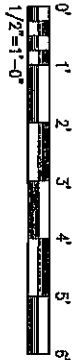
Valarie Southerlin
Buyer



OPENING B - QTY 11
 SC WOOD DOOR - WOOD STOPS
 CLEAR TEMPERED GLASS

OPENING C - QTY 5
 SC WOOD DOOR - WOOD STOPS
 CLEAR TEMPERED GLASS
 HATCHED AREA INDICATES GLASS NOT
 TO BE REPLACED

OPENING D - QTY 9
 ALUMINUM DOOR - ALUMINUM STOPS
 CLEAR TEMPERED GLASS

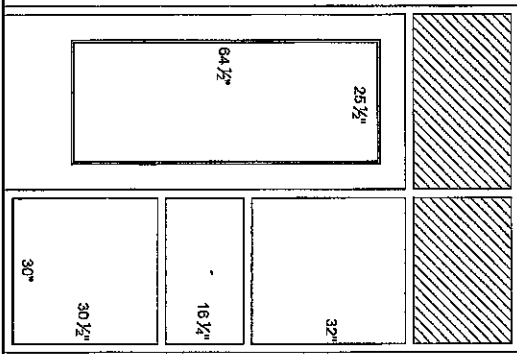


OPENING ELEVATIONS
 GREENVILLE COUNTY SCHOOL DISTRICT
DR. PHINNIZE J. FISHER
MIDDLE SCHOOL
 GREENVILLE, SOUTH CAROLINA

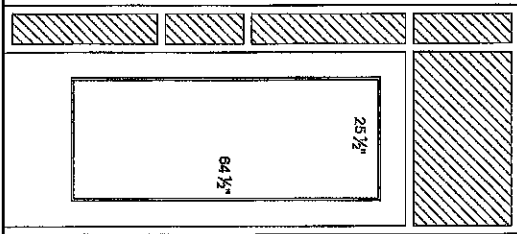
DRAWN: RIB
 JOB: 2013-020
 DATE: INCOMPLETE
 DRAWING NUMBER: **A1**

**ARD, WOOD,
 HOLCOMBE &
 SLATE, INC.**
 ARCHITECTS AND
 PLANNERS
 420 N. MAIN STREET | SUITE 104
 GREENVILLE, SOUTH CAROLINA
 29601
 PHONE: 864-226-6439
 WWW.ARDWOODHOLCOMBEANDSLATE.COM

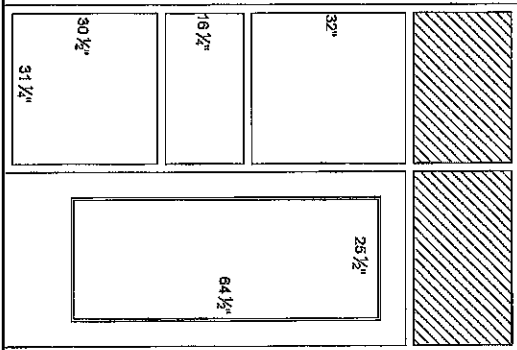




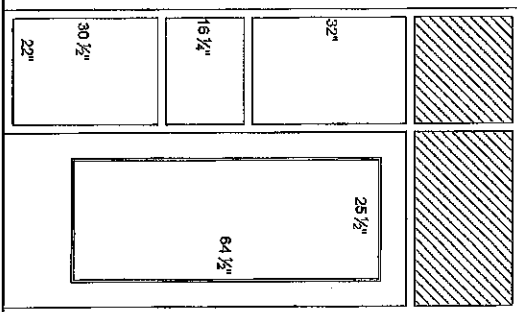
OPENING E - QTY 27
 ALUMINUM DOOR - ALUMINUM STOPS
 CLEAR TEMPERED GLASS
 ALUMINUM STOREFRONT FRAME



OPENING F - QTY 6
 ALUMINUM DOOR - ALUMINUM STOPS
 CLEAR TEMPERED GLASS
 ALUMINUM STOREFRONT FRAME



OPENING G - QTY 3
 ALUMINUM DOOR - ALUMINUM STOPS
 CLEAR TEMPERED GLASS
 ALUMINUM STOREFRONT FRAME
 HATCHED AREA INDICATES GLASS NOT
 TO BE REPLACED



OPENING H - QTY 3
 ALUMINUM DOOR - ALUMINUM STOPS
 CLEAR TEMPERED GLASS
 ALUMINUM STOREFRONT FRAME

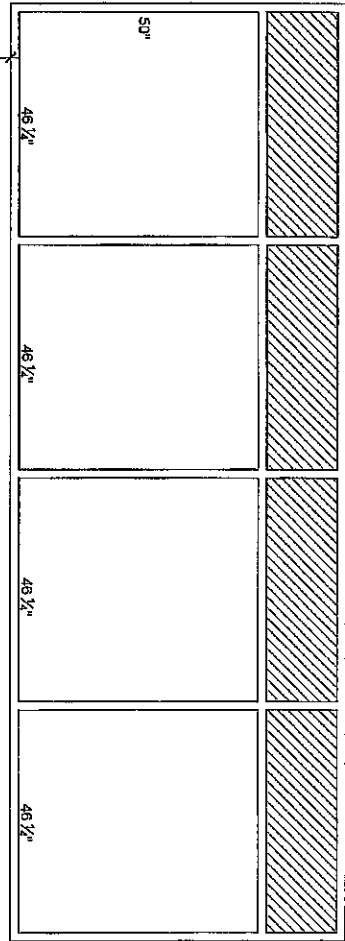


OPENING ELEVATIONS

GREENVILLE COUNTY SCHOOL DISTRICT
DR. PHINNIZE J. FISHER
MIDDLE SCHOOL
 GREENVILLE, SOUTH CAROLINA

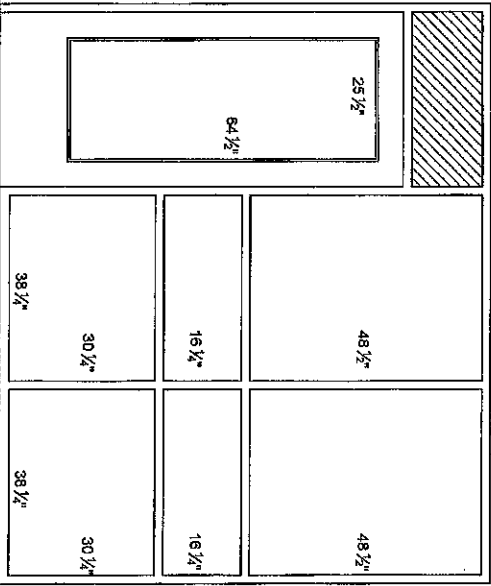
**ARD, WOOD,
 HOLCOMBE &
 SLATE, INC.**
 ARCHITECTS AND
 PLANNERS
 420 N. MAIN STREET, SUITE 104
 GREENVILLE, SOUTH CAROLINA
 29601
 PHONE: 864.242.5480
 FAX: 864.242.5481
 WWW.ARDWOODHOLCOMBEANDSLATE.COM
 SCALE: 1/8" = 1'-0"

	DRAWN: EMB JOB: 2313-020 DATE: INCOMPLETE
	DESIGNED: A2 NUMBER:



OPENING J - QTY 2
ALUM STOREFRONT FRAME
CLEAR TEMPERED GLASS

HATCHED AREA INDICATES GLASS NOT
TO BE REPLACED



OPENING K - QTY 2
ALUM STOREFRONT DOOR - ALUMINUM STOPS
CLEAR TEMPERED GLASS
ALUMINUM STOREFRONT FRAME

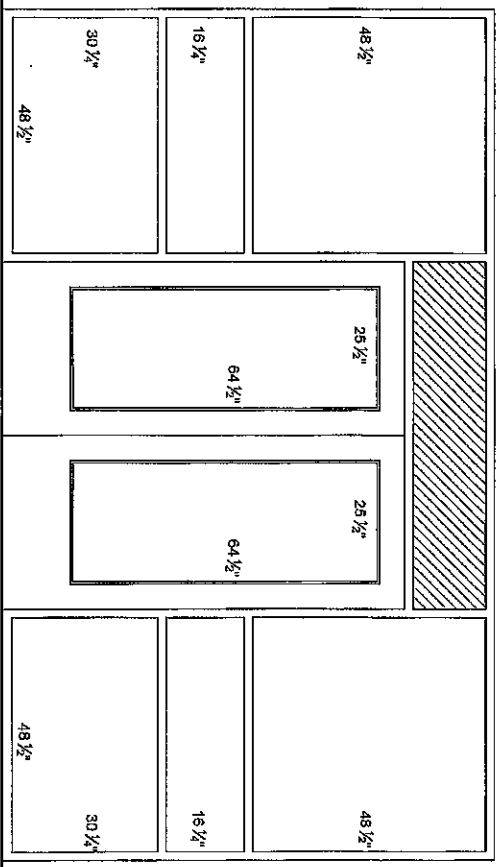
HATCHED AREA INDICATES GLASS NOT
TO BE REPLACED



OPENING ELEVATIONS
GREENVILLE COUNTY SCHOOL DISTRICT
**DR. PHINNIZE J. FISHER
MIDDLE SCHOOL**
GREENVILLE, SOUTH CAROLINA

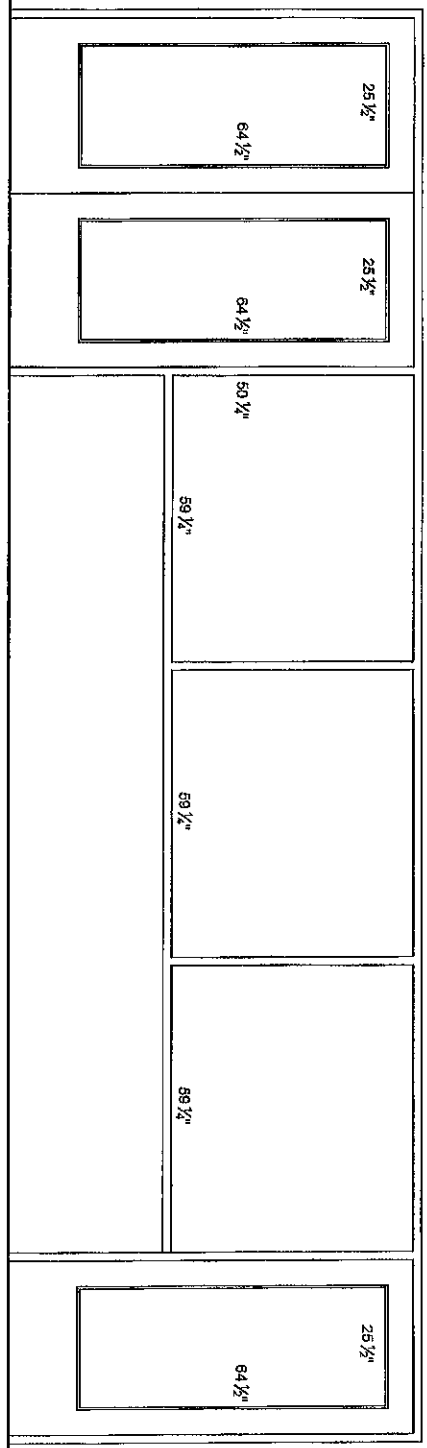
**ARD, WOOD,
HOLCOMBE &
SLATE, INC.**
ARCHITECTS AND
PLANNERS
420 N. MAIN STREET, SUITE 104
GREENVILLE, SOUTH CAROLINA
29601
PHONE: 864-252-5259
WWW.ARDWOODHOLCOMBEANDSLATE.COM

	DRAWING NUMBER	A3
	DATE	NOVEMBER 2020
JOB	2313-020	
DRAWN	EMR	



OPENING 1 - QTY 1
 ALUM STOREFRONT DOOR - ALUMINUM STOPS
 CLEAR TEMPERED GLASS
 ALUMINUM STOREFRONT FRAME

HATCHED AREA INDICATES GLASS NOT
 TO BE REPLACED



OPENING M - QTY 1
 ALUM STOREFRONT DOOR - ALUMINUM STOPS
 CLEAR TEMPERED GLASS
 ALUMINUM STOREFRONT FRAME



OPENING ELEVATIONS
 GREENVILLE COUNTY SCHOOL DISTRICT
**DR. PHINNIZE J. FISHER
 MIDDLE SCHOOL**
 GREENVILLE, SOUTH CAROLINA

ARD, WOOD,
 HOLCOMBE &
 SLATE, INC.
 ARCHITECTS AND
 PLANNERS
 429 N. MAIN STREET | SUITE 104
 GREENVILLE SOUTH CAROLINA
 29601
 PHONE: 864.649.4430
 WWW.ARDWOODHOLCOMBEANDSLATE.COM

AWHS ARCHITECTS	 DRAWING NUMBER A4	DRAWN: EMB JOB: 2313-020 DATE: NOVEMBER
--------------------	---------------------------------	---